

WeatherCoat Champ

Premium Exterior and Interior Emulsion



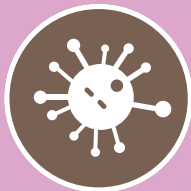
Product Attributes

Reinforced with
Recron® micro
fibers



Ideal for
application on
interior &
exterior surfaces

Sheen
finish



Antifungal
Antialgal

Weather
resistant



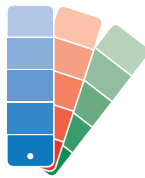
Product Description

WeatherCoat Champ is a 100% acrylic water-based paint suitable for exterior and interior walls. It is reinforced with Recron® micro fibers which give superior strength to the paint film. The paint provides soft sheen finish to the walls. It also comes with a 5 year performance warranty.

Recommended Use

Interior and exterior walls, plasters, false ceilings, asbestos sheets, bison boards etc.

Colour Range



Over 2000 shades

Finish

LUXURY

PREMIUM ✓

SMOOTH ✓

MATT

Gives premium smooth finish

Recommended Thinner



Potable water

Recommended Dilution



- For exterior surface: 40% by volume
- For interior surface: 50% by volume

Application Method



Brush/Spray/Roller (sponge/felt)

Gloss Level



4-7 at 60°

Coverage



Exterior Surface: 55-60 sqft/lit/2 coats
at 40% dilution

Interior Surface: 100-110 sqft/lit/2 coats
at 50% dilution

Drying Time (60% RH at 30° C)



Surface Dry: 15 min

Hard Dry: 6-8 hrs.



WeatherCoat Champ

Premium Exterior and Interior Emulsion



Packs



Fire Hazard Class
Non-flammable



Stability of thinned paint
Use within 24 hours



Shelf Life

3 years from date of manufacturing in unopened containers kept in cool, dry place away from sunlight.

DIRECTIONS OF USE

Surface Preparation:



Undertake repairs of all surface imperfections - cracks, leakages, undulations and rust, if any, caused by drainage pipes.

Scraping & Cleaning:



Remove all loose paint, dirt, fungus, algae, moss and salt deposits, if any, by sanding/scraping.



Exterior walls should be washed thoroughly afterwards.

Crack Bridging:



For filling cracks up to 5 mm use HS Crack Fill Paste. For wider cracks use HS Advanced Latex Plus as per product usage guidelines.

Waterproofing:



Use HS Wallshield 2K on the affected areas as per product usage guidelines. For highly affected areas, use HS Dampstop coating system.

Putty Application:



Apply 2 coats of Bison Wall Putty with 6-8 hrs of drying time after each application. For enhanced waterproofing HS Waterproof Putty is recommended.

	INTERIOR APPLICATION	EXTERIOR APPLICATION
PRIMER APPLICATION	Apply 1 coat of BP Cement Primer*	Apply 1 coat of WeatherCoat Exterior Primer*
	*For best results, use HS Seal-O-Prime	
TOPCOAT APPLICATION	Apply 2-3 coats of WeatherCoat Champ with recommended dilution with a drying time of 6-8 hours after each coat.	
RECOMMENDED DILUTION	Use 500 ml of water per 1 L of emulsion	Use 400 ml of water per 1 L of emulsion

Special Note Before Painting

Check the moisture content of the floor surface (Ideal condition - below 12%)*

*As per tests conducted by Berger R&D

Points to Note

- ▶ Shake well before use and do not over dilute
- ▶ Keep the container tightly closed to prevent drying
- ▶ Keep out of reach of children and away from foodstuff
- ▶ In case of contact with eyes, wash immediately with water and seek medical help

Version No: BPP1/01/2020. Please note that this data sheet supersedes all previous versions.

BERGER PAINTS INDIA LIMITED

Berger House, 129 Park Street, Kolkata 700 017 | CONSUMER RELATIONS MANAGER Ph: 1800-103-6030
Fax: 91-33-2249-9729/9009 | SMS BERGER to 56767 | Email: consumerfeedback@bergerindia.com | www.bergerpaints.com